



BUSINESS CENTRAL

The next generation of business environments

BUSINESS CENTRAL GOLD RIVER LOCATION
2377 and 2355 Gold Meadow Way, Gold River, CA 95670

PROPERTY HIGHLIGHTS

- \$1.90/SF Full Service
- Office Space for 1 to 30 People
- Flexible Lease Terms 6 Months to 5 Years
- Impressive, Grand and Centralized Reception Area
- From 250 to 5,000 SF
- Service Center with On-Site Support Staff, Equipment, and Supplies
- Professional Conference Rooms which Can Accommodate 1 to 50 People
- Centralized, Fully Equipped and Supplied Copier/Mail Rooms
- Multiple Telecom and Server Rooms
- Community Executive Lounge
- Fully Equipped and Supplied Kitchen Areas

SUITES AVAILABLE

- Suite 295
- Suite 143
- Suite 265
- Suite 140

See full pdf package for floor plans

CONTACT

Barbara Cochran

Leasing Manager

(916) 526-2600

bcochran@businesscentral.net

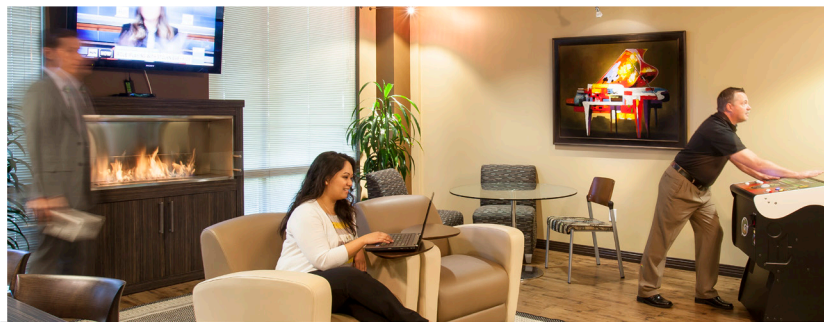
for leasing and
commission details

LEASING BONUS!

6% of 1st year rent revenue
3% of each additional
year rent revenue

ADDITIONAL INCENTIVE

Bonus equal 1% of total lease value redeemable
with choice of: collectible wine, Nordstrom,
Best Buy, Costco or Mikuni gift card



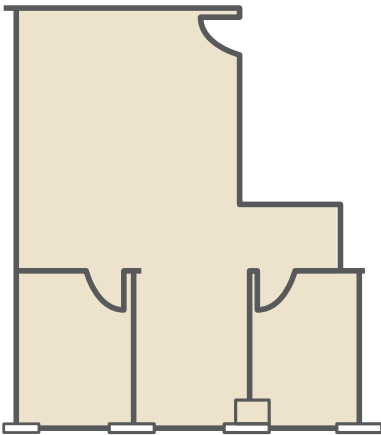


BUSINESS CENTRAL

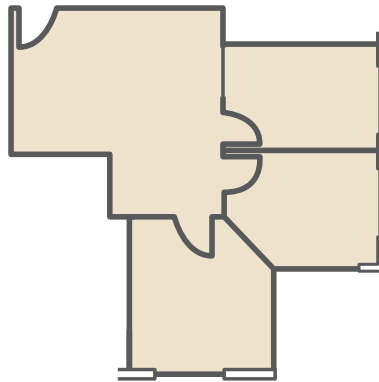
The next generation of business environments

BUSINESS CENTRAL GOLD RIVER LOCATION
2377 and 2355 Gold Meadow Way, Gold River, CA 95670

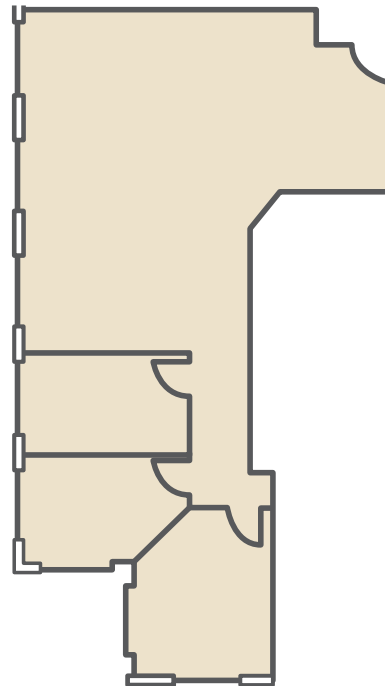
SUITE 140
1,264 RSF



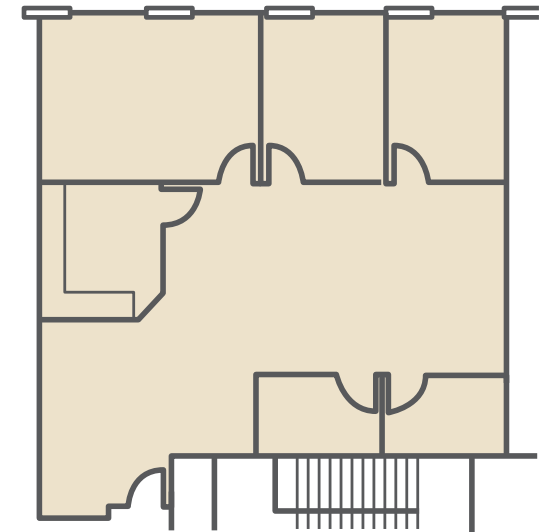
SUITE 143
1,025 RSF



SUITE 265
1,481 RSF



SUITE 295
2,100 RSF



Non architectural drawings for reference only.

CONTACT

Barbara Cochran

Leasing Manager

(916) 526-2600

bcochran@businesscentral.net

for leasing and commission details