



BUSINESS CENTRAL

The next generation of business environments

BUSINESS CENTRAL GOLD RIVER LOCATION
2355 and 2377 Gold Meadow Way, Gold River, CA 95670

PROPERTY HIGHLIGHTS

- \$1.90 to \$2.10 per SF Full Service
- Office Space for 1 to 30 People
- Flexible Lease Terms 12 Months to 5+ Years
- Impressive, Grand and Centralized Reception Area
- From 250 to 5,000 SF
- Service Center with On-Site Support Staff, Equipment, and Supplies
- Professional Conference Rooms which Can Accommodate 1 to 35 People
- Centralized, Fully Equipped and Supplied Copier/Mail Rooms
- Multiple Telecom and Server Rooms
- Community Executive Lounge
- Fully Equipped and Supplied Kitchen Areas

SUITES AVAILABLE

2355 Suites Available: 2377 Suites Available:

- | | |
|------------------|------------------|
| ■ 140 – 1103 rsf | ■ 150 – 858 rsf |
| ■ 150 – 2401 rsf | ■ 210 – 1552 rsf |
| ■ 215 – 1392 rsf | ■ 215 – 1795 rsf |
| ■ 250 – 4388 rsf | ■ 295 – 1268 rsf |

See full pdf package for floor plans

CONTACT

Katie Tenge

Leasing Manager

(916) 526-2600

ktenge@businesscentral.net

for leasing and
commission details

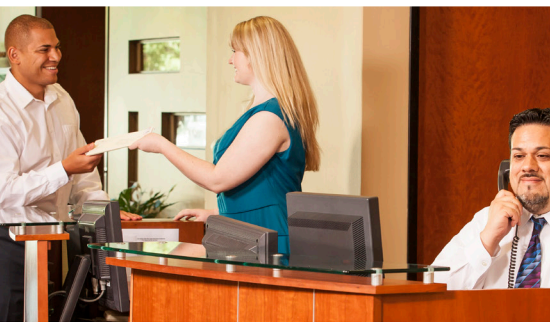
LEASING BONUS!

6% of 1st year rent revenue
3% of each additional
year rent revenue

ADDITIONAL INCENTIVE

November 2025 – January 2026

**Bonus equal 1% of total lease value redeemable
with a gift card of your choice.**





BUSINESS CENTRAL

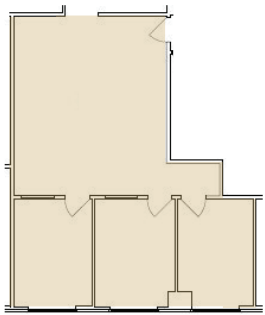
The next generation of business environments

BUSINESS CENTRAL GOLD RIVER LOCATION

2355 Gold Meadow Way, Gold River, CA 95670

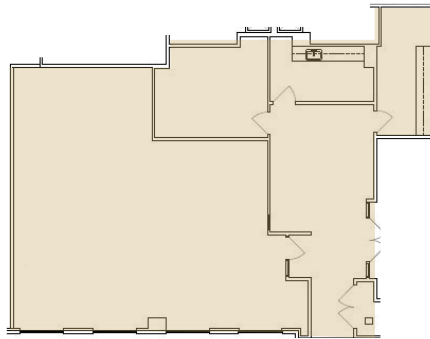
SUITE 140

1,103 RSF



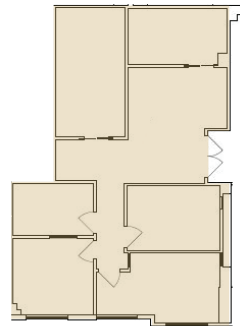
SUITE 150

2,401 RSF



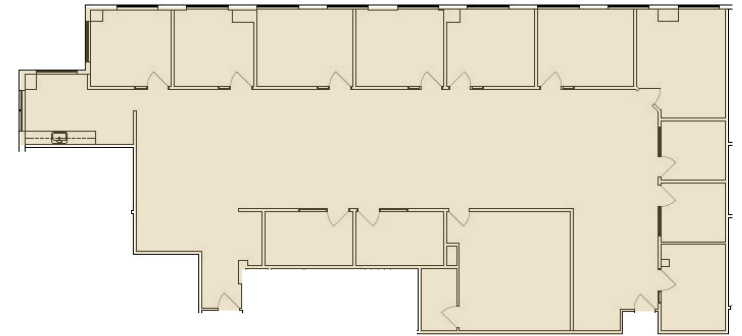
SUITE 215

1,392 RSF



SUITE 250

4,388 RSF



Non architectural drawings for reference only.

CONTACT

Katie Tenge

Leasing Manager

(916) 526-2600

ktenge@businesscentral.net

for leasing and commission details



BUSINESS CENTRAL

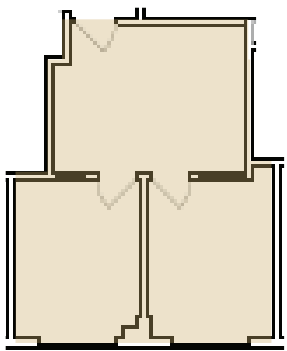
The next generation of business environments

BUSINESS CENTRAL GOLD RIVER LOCATION

2377 Gold Meadow Way, Gold River, CA 95670

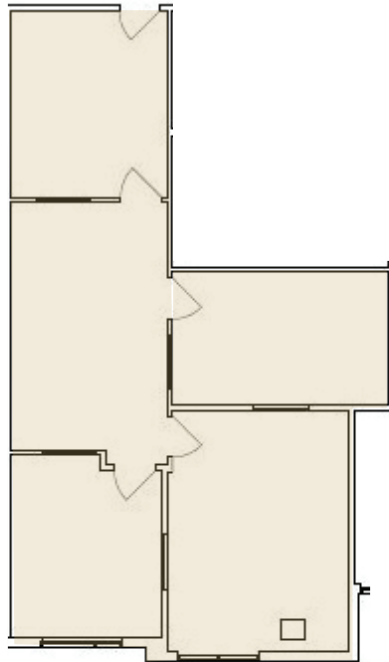
SUITE 150

858 RSF



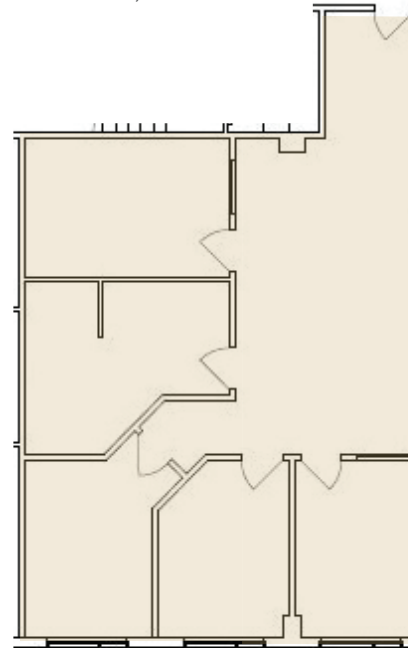
SUITE 210

1,552 RSF



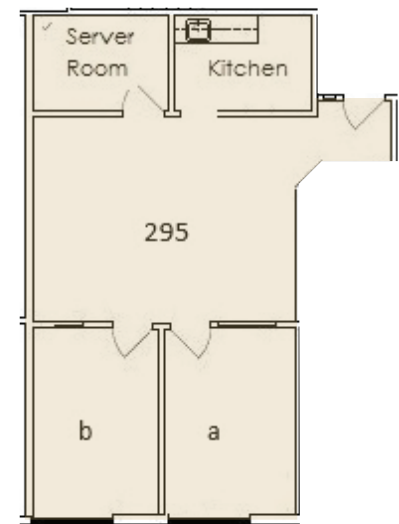
SUITE 215

1,795 RSF



SUITE 295

1,268 RSF



Non architectural drawings for reference only.

CONTACT

Katie Tenge

Leasing Manager

(916) 526-2600

ktenge@businesscentral.net

for leasing and commission details